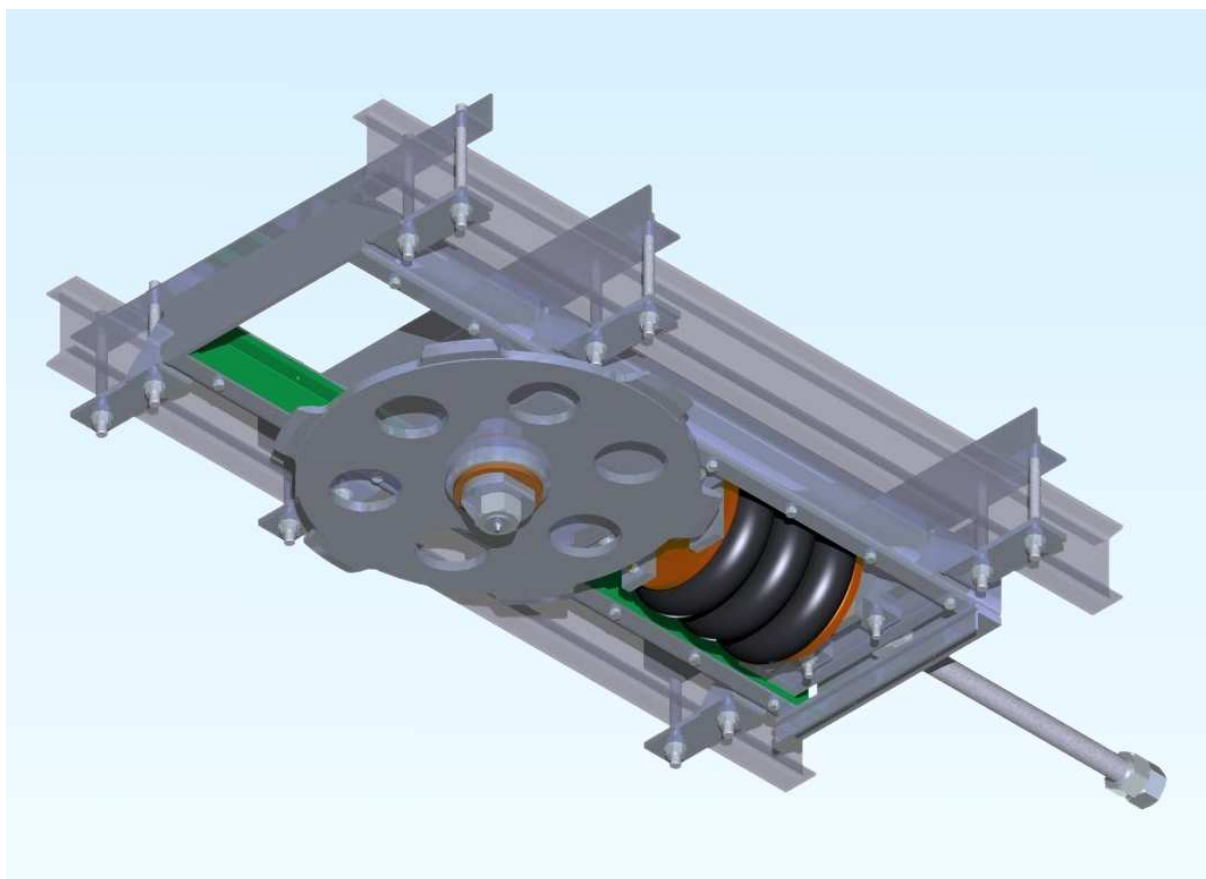


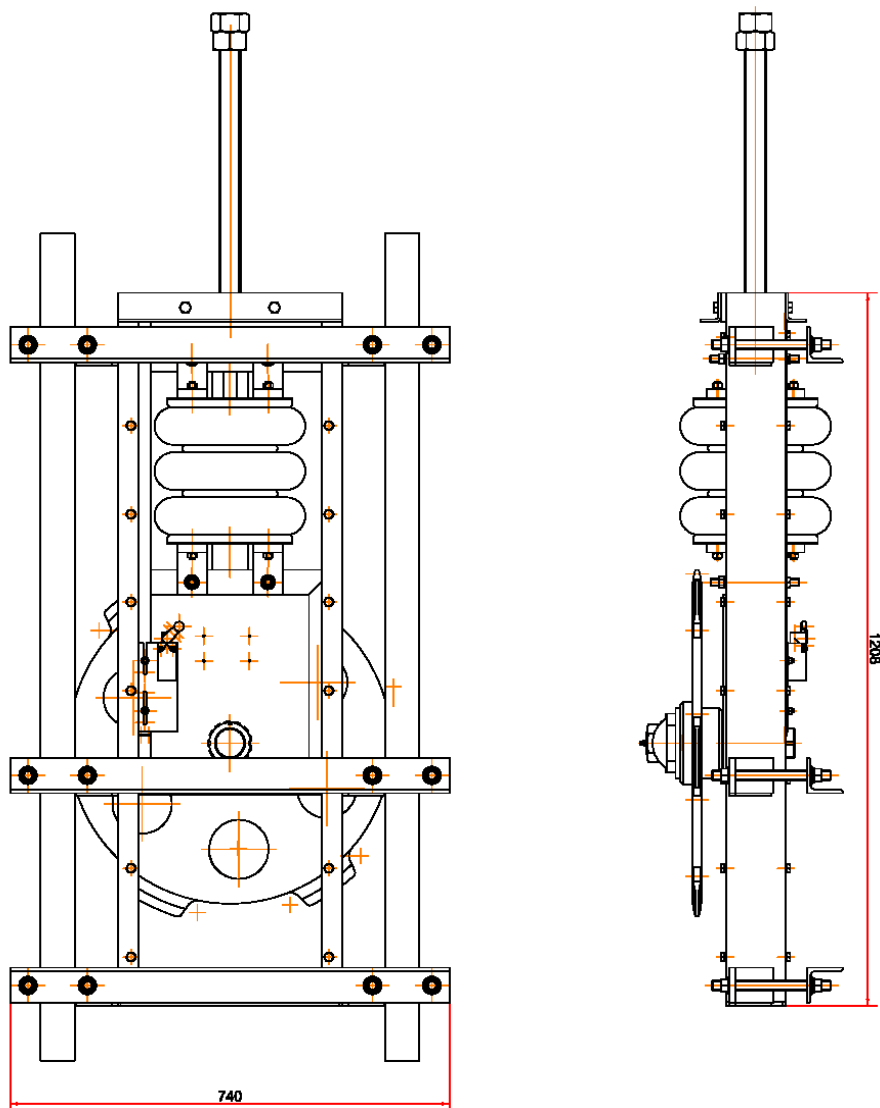


PNEUMATIC TENSIONING DEVICE
for conveyers
with zinc coated chain
type NPD
design 01



Strojírna Pálava Maxima s.r.o.

DESÁTKOVÁ 124/15, 623 00 BRNO KOHOUTOVICE
Manufactory: TOVÁRNÍ 34, 679 32 SVITÁVKA, CZECH REPUBLIC
tel: +420 - 516 453 834, fax: +420 - 516 453 834
e-mail: info@s-palava.cz; www.s-palava.cz



The tensioning device is used for all types of conveyers with zinc coated chain. It serves to the automatic tensing of the conveyer's chain. It eliminates influence on chain's wear and stretch trough the influence in operating and serves right chain tension during the whole life time of the chain.

A part of the tensioning device are also protecting elements – end-sensor – which guarantee to switch off the conveyer in case of failure of the pneumatic elements or drop of air pressure (compressing into first extreme position) or chain's breaking eventually its extension over allowed limit (extension into second extreme position).

Technical data

Max. air pressure	0,7 MPa
Control range	0,2 – 0,7 MPa
Wheel diameter (spacing circle)	483 or 580 mm